

Desigo™ Control Point

Touch Panels 7.0"

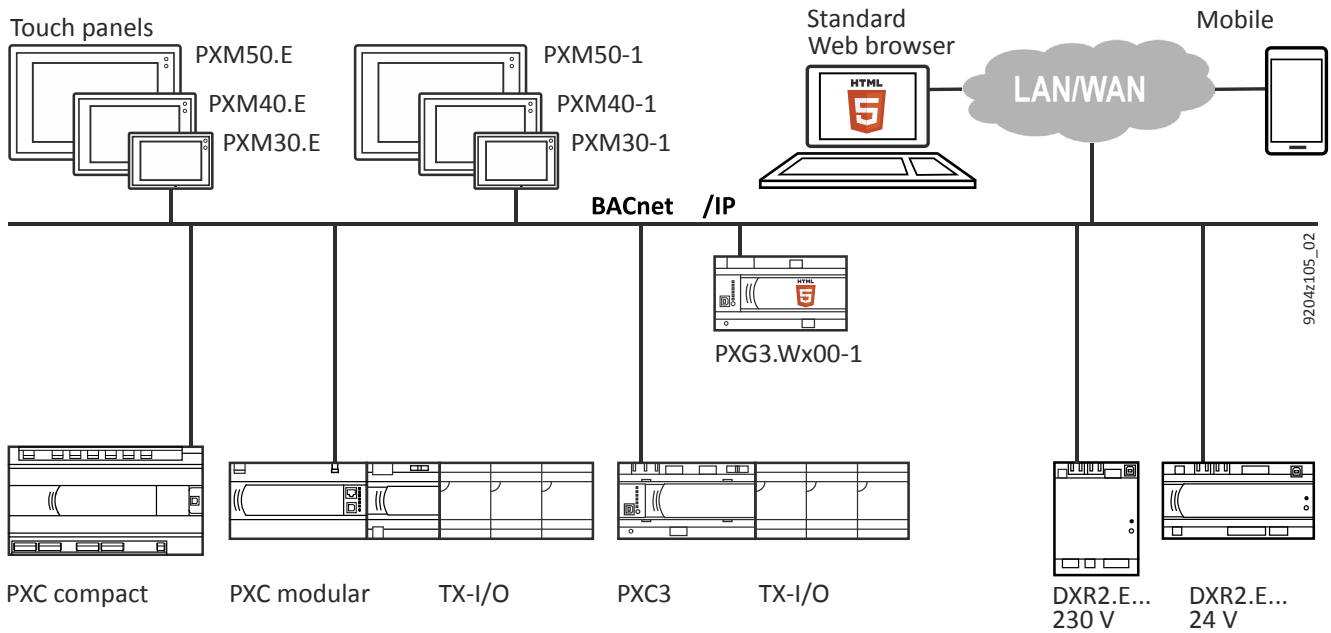
PXM30.E, PXM30-1



High-quality touch panels for technical on-site operation of plants as well as room operation.

- Optimized for local on-site operation of the Desigo building automation and control system
- PXM30.E has an integrated web server and a BACnet/ IP web interface to connect a HTML5 browser to a device on the network
- PXM30-1 is a web client for communicating with HTML5.0 capable web servers, for example, PXG3.W100-1 or PXG3.W200-1
- Generic operation and monitoring of plant functions (alarms, schedulers, calendars, set point changes, display of actual values, etc.)
- Offline engineering of customized graphics with ABT site
- Compact design featuring a low installation depth for mounting in panel doors
- High-resolution, capacitive touch displays (landscape)
- LED to display alarms on an inactive screen
- Operating voltage AC 24 V or DC 24 V

Use



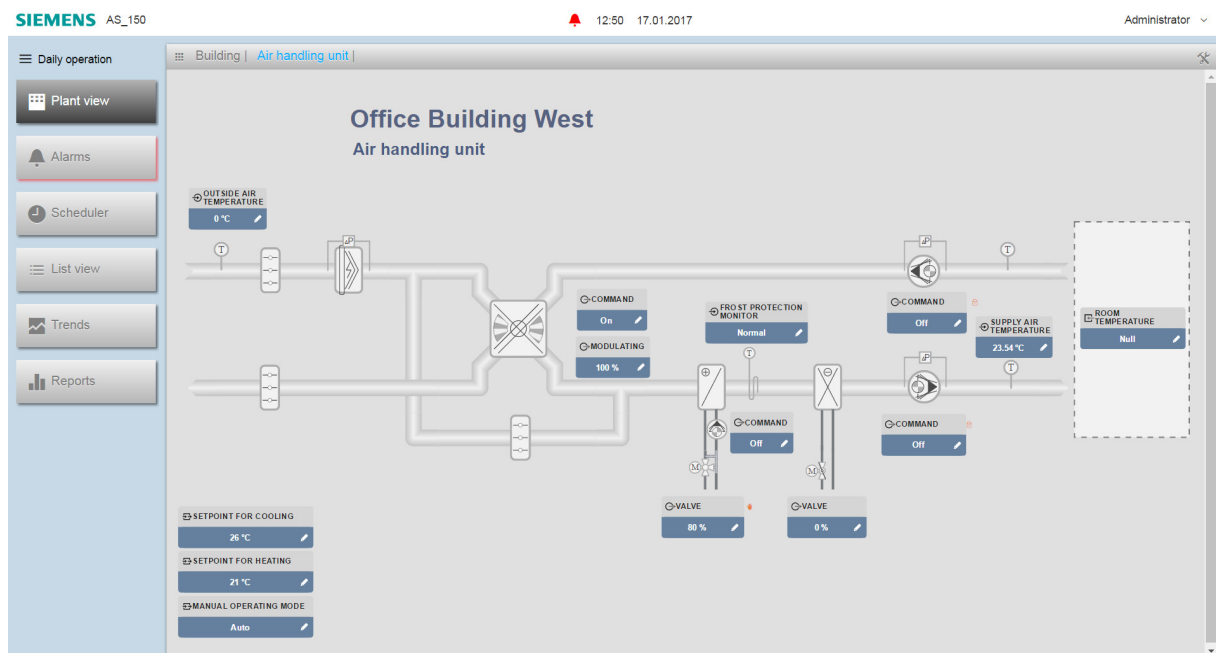
Touch panels are highly flexible and scalable:

- Plant operation by technicians
- Operation of various room environments by the end user.
- Examples: Offices, conference rooms, or even entire floors
- Remote access on very small projects is direct via the touch panel's integrated web interface
- On large projects: A combination of various touch panel variants using HTML5-capable standard operator units (notebook, smart phone, tablet)

The devices can be mounted in panel doors.

Functions

Example for a primary plant



Settings

Different settings are available, however, for user-friendly operation of the touch panel. They can be edited after login.

See ABT-SSA documentation for details.

Function	Description																					
Brightness	Sets the screen's brightness.																					
Time format	24 hours or 12 hours (am/pm).																					
Date format	8 variants are available.																					
Language	Touch panel operating language: Supports 20 languages; the factory setting for the user interface is English.																					
	<table border="0"> <tr> <td>Arabic</td> <td>Italian</td> <td>Rumanian</td> </tr> <tr> <td>Danish</td> <td>Japanese</td> <td>Russian</td> </tr> <tr> <td>English</td> <td>Korean</td> <td>Simplified Chinese</td> </tr> <tr> <td>Finnish</td> <td>Norwegian</td> <td>Traditional Chinese</td> </tr> <tr> <td>French</td> <td>Persian/Farsi</td> <td>Spanish</td> </tr> <tr> <td>German</td> <td>Polish</td> <td>Swedish</td> </tr> <tr> <td>Hindi</td> <td>Portuguese</td> <td>Turkish</td> </tr> </table>	Arabic	Italian	Rumanian	Danish	Japanese	Russian	English	Korean	Simplified Chinese	Finnish	Norwegian	Traditional Chinese	French	Persian/Farsi	Spanish	German	Polish	Swedish	Hindi	Portuguese	Turkish
Arabic	Italian	Rumanian																				
Danish	Japanese	Russian																				
English	Korean	Simplified Chinese																				
Finnish	Norwegian	Traditional Chinese																				
French	Persian/Farsi	Spanish																				
German	Polish	Swedish																				
Hindi	Portuguese	Turkish																				
Keyboard	The interaction with the keyboard is roughly the same as commercially available products such as smart phone, tablets, etc.																					
Auto logout	Time to logout: 5, 10, 15, 30, 45, 60 minutes The automatic logout can be set at intervals of 5 to 60 minutes, including the ability to suppress automatic logout for certain technical reasons.																					
Screensaver	On after 15 minutes, factory setting: On																					

Alarm LED

An LED in the top right-hand corner of the touch panel indicates pending alarms.

Function overview

See Desigo Control Point planning and installation guide, A6V11211560, for functions and system limits.

Type summary

Type	Stock number	Description
PXM30.E	S55623-H128	Touch panel BACnet/IP (with integrated web server)
PXM30-1	S55623-H131	Touch panel (web client)


Product documentation

Document	Document no.
Data sheet touch panels PXM40-1, PXM40.E, PXM50-1, PXM50.E as well as installation frames PXA-V40, PXA-V50	A6V10933114
Data sheet web servers PXG3.W100-1, PXG3.W200-1	A6V10808336
Desigo Control Point Planning and Installation Guide	A6V11170804
Desigo Control Point User's Guide	A6V11211557
Desigo Control Point Engineering manual	A6V11211560
ABT-SSA Online help	--

Related documents such as environmental declarations, CE declarations, etc., can be downloaded at the following Internet address:

<http://siemens.com/bt/download>

Safety

	⚠ CAUTION
	National safety regulations Failure to comply with national safety regulations may result in personal injury and property damage. <ul style="list-style-type: none">• Observe national provisions and comply with the appropriate safety regulations.

Engineering

For additional information on cable lengths, topology, etc.: See Desigo Control Point Planning and Installation Guide, A6V11170804.

Mounting

Mounting types

The touch panels are designed for installation in the panel door.

Mounting Instructions

Mounting instructions are printed on the unit's packaging material.

Cut outs for panel installation

See "Dimensions".

Installation

Power is connected to a plug-in screw terminal block.

Commissioning

Touch panels can be commissioned without tools.

All necessary network parameters can be entered directly on the unit.

No additional engineering required for operation using default views.

Each device has a unique identification number to ensure efficient commissioning.

It is also printed on the removable barcode label.

Maintenance

Cleaning

Touch panels are maintenance free.

Dirt on the display can be cleaned using off-the-shelf display cleaners for smart phones, a moist rag, and/or off-the-shelf microfiber cloth for monitors or glasses.

Firmware upgrade

Firmware upgrades are loaded with ABT Site (at startup, user initiated).
Use either the Ethernet or USB interface.

Repair

The devices cannot be repaired. The entire unit must be replaced.

Disposal



The devices are considered electrical and electronic equipment for disposal in terms of the applicable European Directive and may not be disposed of as domestic garbage.

- Dispose of the devices through channels provided for this purpose.
- Comply with all local and currently applicable laws and regulations.

Power

Operating voltage Safety extra-low voltage SELV or protection by extra-low voltage PELV as per HD384	AC 24 V ±20% (SELV / PELV) AC 24 V class 2 (US) DC 24 V ±15% (SELV / PELV) DC 24 V class 2 (US)
Frequency	50/60 Hz
Maximum power consumption At AC 24 V At DC 24 V	Max. 29 VA Max. 17 W
Screw terminals for wire cross sections up to	2.5 mm ²
External supply line fusing (EU) <i>At AC / DC 24 V power</i>	Non-renewable fuse max. 10 A slow or circuit breaker max. 13 A Tripping characteristic B, C, D per EN 60898 or Power supply with current limitation of max. 10 A

Display

Size	7.0"
Resolution	1024 x 600
Type	TFT
Number of colors	16.2 mn
Viewing angle H/V	Typically 120 / 110°
Backlit display	LED, dimmable
Touch pad	Projective capacitive

Connections

Screw terminals, plug-in	
Cu-wire or Cu-strand with wire end sleeve	1 x 0.6 mmØ to 2.5mm ² (22 to 14 AWG) or 2 x 0.6 mmØ to 1.0 mm ² (22 to 18 AWG)
Cu-strand without wire end sleeve	1 x 0.6 mmØ to 2.5 mm ² (22 to 14 AWG) or 2 x 0.6 mmØ to 1.5 mm ² (22 to 16 AWG)
Stripping length	6...7.5 mm (0.24...0.29 in)
Slotted screws	Screwdriver, size 1 with shaft ø ≤ 4.5 mm
Max. tightening torque	0.6 Nm (0.44 lb ft)

Ethernet interface	
Plug	RJ45, screened
Interface type	100BASE-TX, IEEE 802.3 compatible
Bit rate	10/100 Mbps, autosensing
Protocol	BACnet over UDP/IP
Galvanic isolation of system neutral ⊥	Yes

Interface USB 2.0	
Plug	Type B (device)
Data rate (USB 2.0 full speed)	12 MBit/s
Protective switch against surges and over current	Yes
Galvanic isolation of system neutral ⊥	No

Conformity

Ambient conditions and protection classification	
Assigned per EN 62368-1 <ul style="list-style-type: none"> Degree of pollution Overvoltage category 	<ul style="list-style-type: none"> 2 III
Design type	Device suited for use with equipment of safety classes I and II
Degree of protection of housing to EN 60529 <ul style="list-style-type: none"> From the front From the back (panel mounted) 	<ul style="list-style-type: none"> IP54 IP20
Climatic ambient conditions <ul style="list-style-type: none"> Transport (packaged for transport) as per EN 60721-3-2 Operation per EN 60721-3-3 (wall mounted) Operation per EN 60721-3-3 (panel mounted) 	<ul style="list-style-type: none"> Class 2K3 Temperature -25...70 °C (-13... 158 °F) Air humidity 5...90% Class 3K4 Temperature 0...40 °C (32... 104 °F) Air humidity 5...90 % (non-condensing) Class 3K5 Temperature 0...50 °C (32... 122 °F) Air humidity 5...90 % (non-condensing)
Mechanical ambient conditions <ul style="list-style-type: none"> Transport to EN 60721-3-2 Operation per EN 60721-3-3 	<ul style="list-style-type: none"> Class 2M2 Class 3M2
Maximum elevation above sea level	3000m above sea level

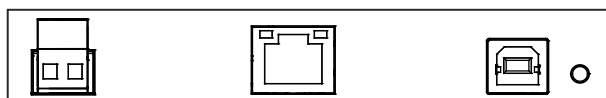
Standards, directives and approvals	
Product standard EN 62368-1	Information Technology Equipment - Safety - Part 1
Electromagnetic compatibility	For residential, commercial, and industrial environments
EU conformity (CE)	See CE declaration CM1T9292xx ¹⁾
EAC compliance	Eurasian compliance
RCM conformity	See RCM declaration CM1T9292en_C1 ¹⁾
UL approbation (US)	UL 916, http://ul.com/database
cUL-Approbation (Canada)	cUL 916, http://ul.com/database
FCC	CFR 47 Part 15 Class B
CSA certification	C22.2, http://csagroup.org
BACnet (<i>PXM40-E, PXM50-E only</i>)	B-OD
Environmental compatibility ¹⁾	The product environmental declaration contains data on environmentally compatible product design and assessments (RoHS compliance, materials composition, packaging, environmental benefit, disposal).

¹⁾ Documents can be downloaded at <http://siemens.com/bt/download>.

Housing

Dimensions	See "Dimensions"
Color	Plastic frame; Glass, reflecting
Weight without / with packaging	1117 / 1745 g

Connection terminals



AC / DC 24 V

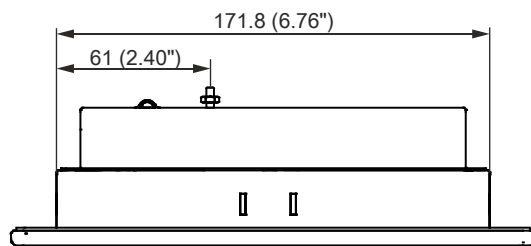
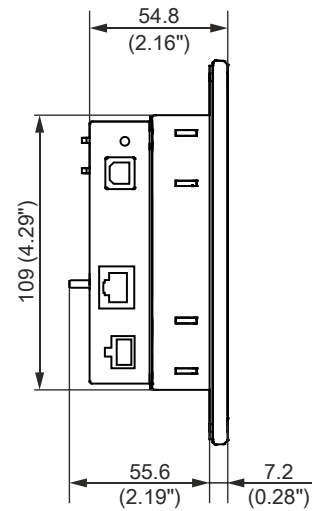
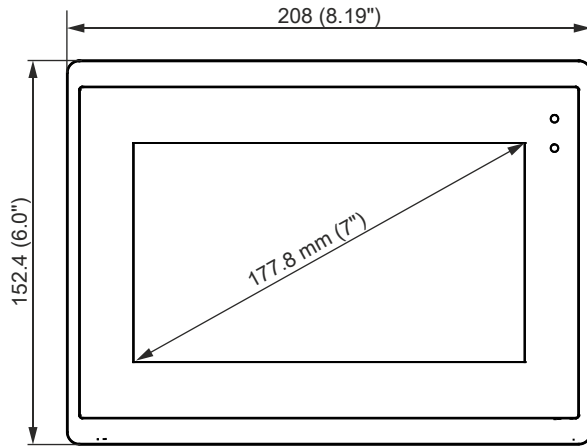
LAN RJ45

USB

Reset

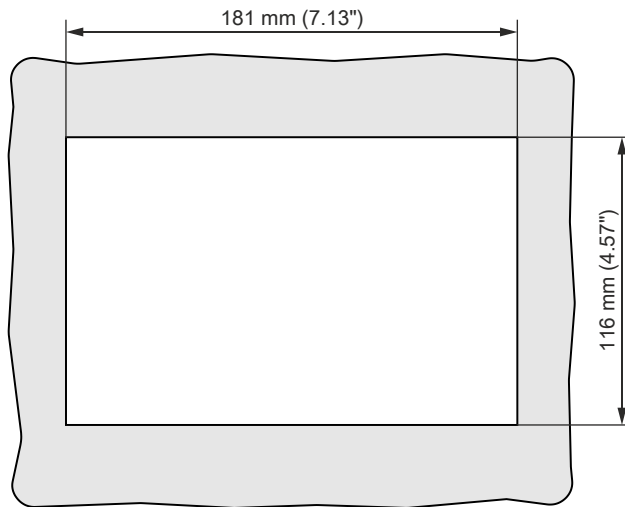
Dimensions

All dimensions provided in mm and inches.



A6V10933111_M02_02

Panel cut out



A6V10933111_M01_01

Handelsmarken



Oracle and Java are trademarks or registered trademarks of Oracle America, Inc.

Issued by
Siemens Switzerland Ltd
Building Technologies Division
International Headquarters
Gubelstrasse 22
CH-6300 Zug
Tel. +41 41 724 2424
www.siemens.com/buildingtechnologies

© Siemens Switzerland Ltd, 2017
Technical specifications and availability subject to change without notice.